

# Council Tax 2020/21

## Well-being Impact Assessment Report


This report summarises the likely impact of the proposal on the social, economic, environmental and cultural well-being of Denbighshire, Wales and the world.

Assessment Number:	758
Brief description:	It is a proposed rise in Council Tax of 4.3% in order to support the 2020/21 budget.
Date Completed:	Version: 0
Completed by:	
Responsible Service:	Finance
Localities affected by the proposal:	Whole County,
Who will be affected by the proposal?	Council Tax payers in Denbighshire
Was this impact assessment completed as a group?	Yes

# IMPACT ASSESSMENT SUMMARY AND CONCLUSION

Before we look in detail at the contribution and impact of the proposal, it is important to consider how the proposal is applying the sustainable development principle. This means that we must act "in a manner which seeks to ensure that the needs of the present are met without compromising the ability of future generations to meet their own needs."

## Score for the sustainability of the approach

 ( 3 out of 4 stars ) Actual score : 23 / 30.

## Implications of the score

Whilst the Council Tax rise will increase the amount paid, it also allows the council to increase funding to provision in key areas such as social care and schools and maintain service levels broadly (there are some reductions but are not significant in terms of the size entire package) throughout other areas during 2020/21.

## Summary of impact

Well-being Goals

A prosperous Denbighshire

A resilient Denbighshire

A healthier Denbighshire

A more equal Denbighshire

A Denbighshire of cohesive communities

A Denbighshire of vibrant culture and thriving Welsh language

A globally responsible Denbighshire

Neutral

Positive

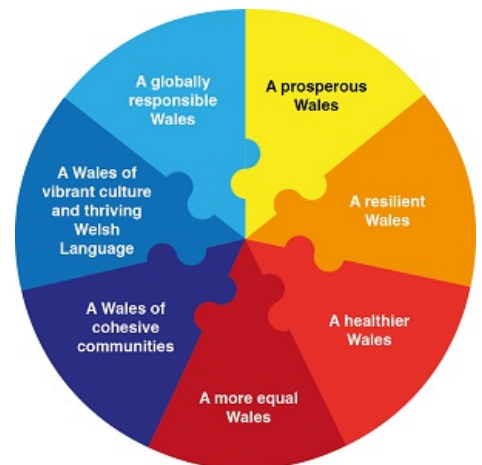
Neutral

Neutral

Positive

Neutral

Neutral



## Main conclusions

The impacts are broadly neutral. This is because the Council Tax rise proposed supports a budget that protects existing service levels and increases investment in social care, schools and in new priorities. Clearly the impact is the increased tax paid by residents. The main mitigation is that around 25% of tax payers receive financial support through the Council Tax Reduction Scheme. However, it is recognised that for some taxpayers, the proposed rise will create an additional financial burden, particularly for those with relatively fixed incomes or little disposable income.

## Evidence to support the Well-being Impact Assessment

- We have consulted published research or guides that inform us about the likely impact of the proposal
- We have involved an expert / consulted a group who represent those who may be affected by the proposal
- We have engaged with people who will be affected by the proposal

# THE LIKELY IMPACT ON DENBIGHSHIRE, WALES AND THE WORLD

## A prosperous Denbighshire

<b>Overall Impact</b>	Neutral
<b>Justification for impact</b>	Whilst the Council Tax rise will increase the amount paid, it also allows the council to increase funding to provision in key areas such as social care, waste services, school transport and schools and maintain service levels broadly. It also allows funding of a number of corporate priorities including Carbon Neutral targets and coping with Ash die-back.
<b>Further actions required</b>	There will be an impact on the personal budgets of those who will not qualify for support: residents will pay more Council Tax - however there is support via the Council Tax reduction scheme for those who qualify for such support.

### Positive impacts identified:

<b>A low carbon society</b>	
<b>Quality communications, infrastructure and transport</b>	
<b>Economic development</b>	
<b>Quality skills for the long term</b>	
<b>Quality jobs for the long term</b>	
<b>Childcare</b>	

### Negative impacts identified:

<b>A low carbon society</b>	
<b>Quality communications, infrastructure and transport</b>	
<b>Economic development</b>	
<b>Quality skills for the long term</b>	
<b>Quality jobs for the long term</b>	
<b>Childcare</b>	

## A resilient Denbighshire

<b>Overall Impact</b>	Positive
-----------------------	----------

<b>Justification for impact</b>	The Council Tax rise proposed supports a budget that includes continued support in key priority areas highlighted such as biodiversity and flood risk management. The budget allows for a number of service pressures which will stand the Council in good stead to face the funding challenges of future years.
<b>Further actions required</b>	Residents will pay more Council Tax - however there is support via the Council Tax Reduction Scheme for those who qualify for such support. For those who do not qualify for Council Tax Reduction Scheme support, the Council works closely and proactively with Citizens Advice to provide help and support with personal budgeting to those residents who may require it. Flexible payment options are available over ten or twelve months.

### Positive impacts identified:

<b>Biodiversity and the natural environment</b>	Corporate Priorities in this area are being recognised in the budget proposals.
<b>Biodiversity in the built environment</b>	Corporate Priorities in this area are being recognised in the budget proposals.
<b>Reducing waste, reusing and recycling</b>	£1.4m is being added to the Waste Budget in order to help provide the service with resilience to implement new waste recycling facilities.
<b>Reduced energy/fuel consumption</b>	Corporate Priorities in this area are being recognised in the budget proposals.
<b>People's awareness of the environment and biodiversity</b>	Corporate Priorities in this area are being recognised in the budget proposals.
<b>Flood risk management</b>	Specific funding is included in the proposals to match fund capital investment in flood defences.

### Negative impacts identified:

<b>Biodiversity and the natural environment</b>	
<b>Biodiversity in the built environment</b>	
<b>Reducing waste, reusing and recycling</b>	
<b>Reduced energy/fuel consumption</b>	
<b>People's awareness of the environment and biodiversity</b>	
<b>Flood risk management</b>	

## A healthier Denbighshire

<b>Overall Impact</b>	Neutral
-----------------------	---------

<b>Justification for impact</b>	The proposal to raise Council Tax supports a budget that allows service eligibility criteria to be maintained as much as possible. Not implementing the proposed rise would inevitably lead to reductions in service provision.
<b>Further actions required</b>	Residents will pay more Council Tax - however there is support via the Council Tax reduction scheme for those who qualify for such support. Help to those who do not qualify for Council Tax Reduction Scheme support, flexible payment options are available. Also, the Council works closely and proactively with Citizens Advice to provide help and support with personal budgeting to those residents who may require it.

### Positive impacts identified:

<b>A social and physical environment that encourage and support health and well-being</b>	
<b>Access to good quality, healthy food</b>	
<b>People's emotional and mental well-being</b>	The Council Tax proposal supports a budget that maintains activity and service eligibility criteria in 2020/21 and provides increased funding for social care.
<b>Access to healthcare</b>	
<b>Participation in leisure opportunities</b>	

### Negative impacts identified:

<b>A social and physical environment that encourage and support health and well-being</b>	
<b>Access to good quality, healthy food</b>	
<b>People's emotional and mental well-being</b>	In some circumstances, where residents have relatively fixed incomes or little disposable income and do not qualify for support, the additional cost may cause a degree of anxiety or stress.
<b>Access to healthcare</b>	
<b>Participation in leisure opportunities</b>	

## A more equal Denbighshire

<b>Overall Impact</b>	Neutral
<b>Justification for impact</b>	The proposal to raise Council Tax supports a budget that avoids significant cuts to services received by the public in 2020/21. There are no known negative impacts on people with protected characteristics, there is an assumption that some people with protected characteristics will be eligible for council tax relief

<p><b>Further actions required</b></p>	<p>Residents will pay more Council Tax - however there is support via the Council Tax Reduction Scheme for those who qualify for such support. If someone is eligible for Council Tax support, the support applies immediately and so there would be no delay in accessing the support. For those who do not qualify for Council Tax Reduction Scheme support, the Council works closely and proactively with Citizens Advice to provide help and support with personal budgeting to those residents who may require it. Flexible payment options are available over ten or twelve months.</p>
--	--

**Positive impacts identified:**

<p><b>Improving the well-being of people with protected characteristics. The nine protected characteristics are: age; disability; gender reassignment; marriage or civil partnership; pregnancy and maternity; race; religion or belief; sex; and sexual orientation</b></p>	<p>The proposals allow for additional funding to be allocated to social care budgets. There are no known negative impacts on people with protected characteristics, there is an assumption that some people with protected characteristics will be eligible for council tax relief.</p>
<p><b>People who suffer discrimination or disadvantage</b></p>	
<p><b>Areas with poor economic, health or educational outcomes</b></p>	
<p><b>People in poverty</b></p>	

**Negative impacts identified:**

<p><b>Improving the well-being of people with protected characteristics. The nine protected characteristics are: age; disability; gender reassignment; marriage or civil partnership; pregnancy and maternity; race; religion or belief; sex; and sexual orientation</b></p>	
--	--

<b>People who suffer discrimination or disadvantage</b>	
<b>Areas with poor economic, health or educational outcomes</b>	
<b>People in poverty</b>	Residents will pay more Council Tax. Those who qualify will be supported by the Council Tax reduction scheme. There will be some residents who do not qualify and for whom the tax rise will be an additional burden.

## A Denbighshire of cohesive communities

<b>Overall Impact</b>	Positive
<b>Justification for impact</b>	The proposal to raise Council Tax supports a budget that protects front line services and protects the investment in new priority areas to enhance community resilience.
<b>Further actions required</b>	Residents will pay more Council Tax - however there is support via the Council Tax Reduction Scheme for those who qualify for such support. For those who do not qualify for Council Tax Reduction Scheme support, the Council works closely and proactively with Citizens Advice to provide help and support with personal budgeting to those residents who may require it. Flexible payment options are available over ten or twelve months.

### Positive impacts identified:

<b>Safe communities and individuals</b>	
<b>Community participation and resilience</b>	The proposal avoids significant cuts to service levels during 2020/21 and builds in priority investment in connecting communities and resilience as part of the priority funding for 2020/21.
<b>The attractiveness of the area</b>	
<b>Connected communities</b>	
<b>Rural resilience</b>	

### Negative impacts identified:

<b>Safe communities and individuals</b>	
<b>Community participation and resilience</b>	
<b>The attractiveness of the area</b>	
<b>Connected communities</b>	
<b>Rural resilience</b>	

## A Denbighshire of vibrant culture and thriving Welsh language

<b>Overall Impact</b>	Neutral
<b>Justification for impact</b>	The proposal to raise Council Tax supports a budget that helps to maintain services received by the public.
<b>Further actions required</b>	The negatives are managed through Council Tax relief being available for those who qualify for the support, though clearly this does not address the impact on all residents.

### Positive impacts identified:

<b>People using Welsh</b>	
<b>Promoting the Welsh language</b>	
<b>Culture and heritage</b>	

### Negative impacts identified:

<b>People using Welsh</b>	
<b>Promoting the Welsh language</b>	
<b>Culture and heritage</b>	

## A globally responsible Denbighshire

<b>Overall Impact</b>	Neutral
<b>Justification for impact</b>	The proposal to raise Council Tax supports a budget that allows service levels to be broadly maintained in 2020/21 and so should not therefore adversely impact supply chains.
<b>Further actions required</b>	Residents will pay more Council Tax - however there is support via the Council Tax Reduction Scheme for those who qualify for such support. For those who do not qualify for Council Tax Reduction Scheme support, the Council works closely and proactively with Citizens Advice to provide help and support with personal budgeting to those residents who may require it. Flexible payment options are available over ten or twelve months.

### Positive impacts identified:

<b>Local, national, international supply chains</b>	The proposal allows for service levels to be broadly maintained during 2020/21.
<b>Human rights</b>	
<b>Broader service provision in the local area or the region</b>	It also allows funding of a number of corporate priorities including Carbon Neutral targets and coping with Ash die-back.

### Negative impacts identified:



<b>Local, national, international supply chains</b>	
<b>Human rights</b>	
<b>Broader service provision in the local area or the region</b>	